



IDRO



D A T I

The remote management system

for your water intake work.

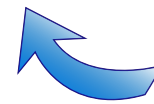
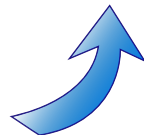
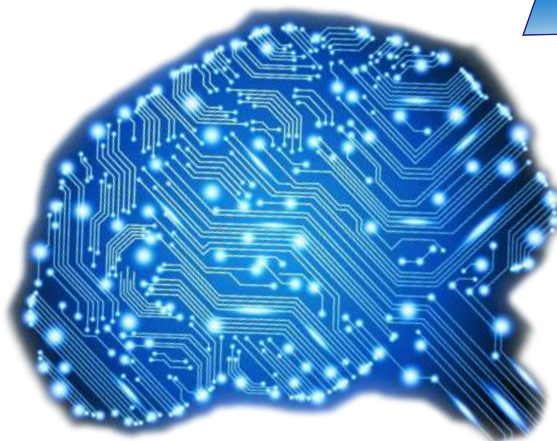
EXPERIENCE AND INNOVATION FOR FOOD & BEVERAGE



For over 20 years Idroricerche has been aimed at enhancing the importance of water resource, a fundamental element for life, nutrition, processing in any type of production process.

Our specialization in the Food & Beverage sector drove us to research and develop technological solutions for implant automation, in order to guarantee efficiency and quality in the production lines of water and beverages, from the well or spring to bottling.

It is thanks to the experience gained over the years that we conceived, designed and created **Da.Ti.**, a revolutionary system for the remote management of the water intake works.





DESCRIPTION

- “Bivalent” hardware/software system that allows to remotely manage the water intake works (springs and wells)
- It acquires, stores and sends the data detected by the instrumentation
- It receives and transmits instructions for managing the components of the water intake works
- It can operate via Ethernet cable or via mobile network
- It can be used on the most common operating systems on the market and through the main devices

ADVANTAGES

- Complete remote control
- Real-time display of monitored values
- Easiness and compatibility: intuitive interface, works on the most common operating systems
- Versatility: communicates with most of the equipment on the market, as well as with SCADA in use on all Idroricerche implants
- Possibility to configure notifications/alarms, with personalized set-point adjustment
- Command management: equipped with the automation for the remote control of system components and of an anti-intrusion system
- Customization: the system is designed and configured according to specifications and the client's needs
- Flexibility and modularity: new functions can be implemented and it is possible to add instrumentation also after setup
- Possibility of remote assistance
- High quality and easily available components

PRELIMINAR OPERATIONS

- Assessment of the characteristics of the water intake work to combine the system with Design and sizing suitable for the type of production
- Main objective: to obtain the maximum efficiency of the plant based on the customer's needs

FEATURES

- 230V AC power supply, via network or photovoltaic panels and 12V accumulator
- Connectable instrumentation via analogue output 4÷20 mA / 0÷10V
- Acquires all values relating to the installed equipment on the intake plant on the data logger (e. g. conductivity, instant/total quantity, temperature, well level)
- Configurable logging frequency
- Automatic processing of databases with the creation of .csv files
- Possibility to send data via Ethernet connection or mobile network or acquisition via USB port
- Specific configurable alarms
- Remote control management relating to the components of the intake work (es. valves, motors, sensors, pumps)
- Possibility to manage an anti-intrusion system
- Compatible with Microsoft Windows and Apple MacOS operating systems and with Android and iOS devices
- Intuitive graphical interface

AFTER SALE

- System supplied tested and ready for use
- Possibility of further expansion: implementation of new functions for the management of additional instrumentation
- Availability and planning of dedicated assistance formulas



Località Brucco - Frazione Abrau | 12013 Chiusa di Pesio | Cuneo - Italia
idroricerche.com | info@idroricerche.com | +39 0171 734154